

INDIAN RIVER GARDENS

A RESUBDIVISION OF WIEGAND'S
SUBDIVISION LESS LOT 6

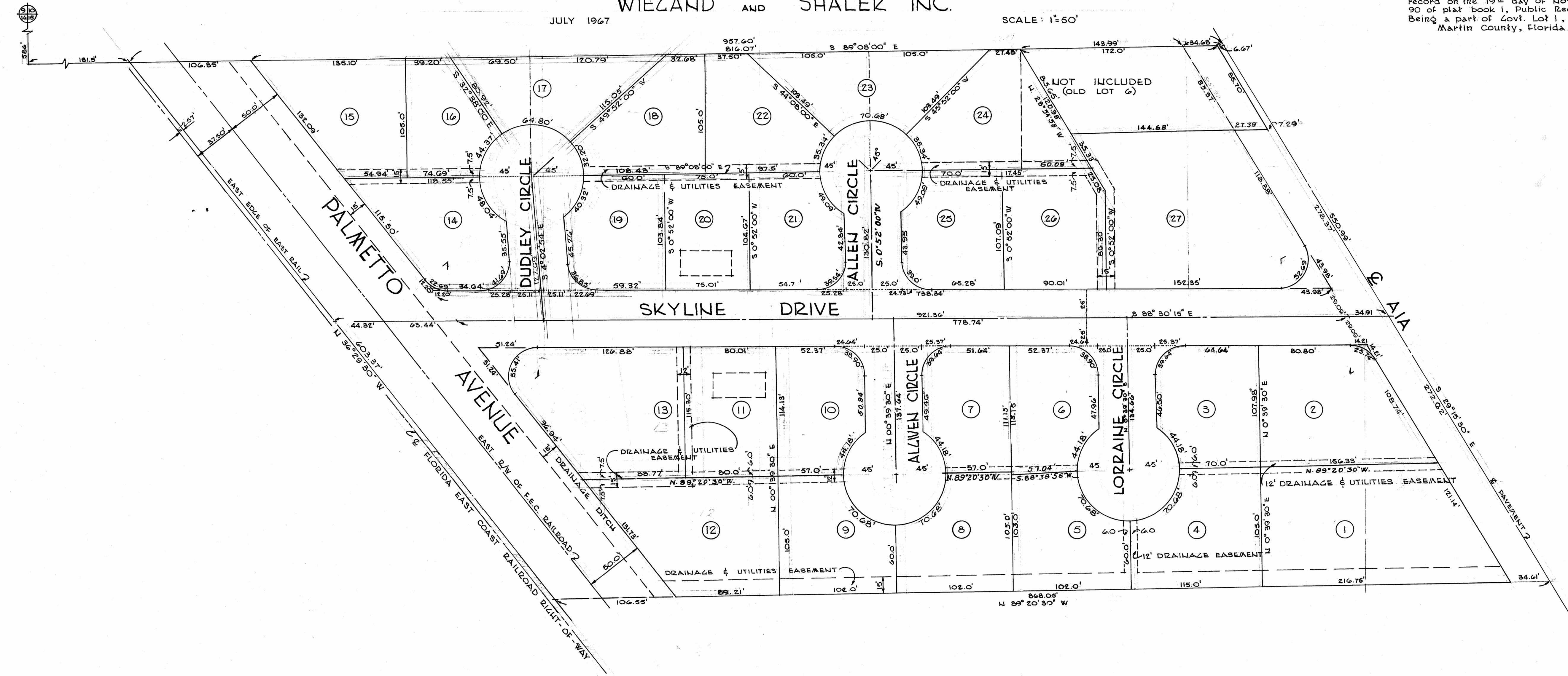
AS RECORDED IN PLAT BOOK 2 PAGE 50 OF MARTIN CO. PUBLIC RECORDS.

BY
GREENLEES, ARBOCAST AND MONTZOMERY INC.
STUART, FLORIDA
FOR

WIEGAND AND SHALER INC.

JULY 1967

SCALE: 1"=50'



STATE OF FLORIDA
COUNTY OF MARTIN
I, Dorothy Perce, County Clerk of
Martin County, Florida, hereby certify that this plat has
been examined and that it complies in form with all the
requirements of the Statutes of Florida pertaining to maps
and plats and that this plat has been filed for record
in Plat Book 4 Page 70, Public Records
of Martin County Florida, this 5th day of
June, A.D. 1968
By Dorothy Perce
Clerk of Circuit Court
129168

DESCRIPTION

Lot 1 of the Gaines Estate Subdivision lying east of
the Florida East Coast Railroad R/W and filed for
record on the 19th day of Nov. 1930, recorded on page
90 of plat book 1, Public Records of Martin County Fla.
Being a part of Govt. Lot 1, Sec. 15, T37S, R41E
Martin County, Florida.

ACKNOWLEDGEMENT

STATE OF FLORIDA } s.s.
COUNTY OF MARTIN }
Before me, the undersigned Notary Public, personally appeared Albert J. Wiegand President and
Lwendolym W. Wiegand Secretary of Wiegand & Shaler Inc., a Florida Corporation, to me known to be
the individuals described in and who executed the foregoing certificate of dedication,
they duly acknowledge before me that they executed the same, as such officers for and
in behalf of said Corporation.
Witness, my hand and official seal at Martin County, Florida, this 25th day of
April, A.D. 1967.
Shirley J. Bailey
Notary Public State of Florida at Large
My Commission expires March 29, 1968



DEDICATION

STATE OF FLORIDA } s.s.
COUNTY OF MARTIN }
Wiegand & Shaler Inc., a Florida Corporation, by its duly elected President
Albert J. Wiegand and by its duly elected Secretary, Lwendolym W. Wiegand
acting by and with authority of its Board of Directors, certify ownership by said
Corporation of the property described herein, and does hereby dedicate
and set apart all of the streets, thoroughfares, parks and other open spaces, canals
and drainage or other easements shown on this plat to the use of the general
public forever.
In Witness Whereof, the undersigned Corporation has caused these presents
to be executed by President and attested by its Secretary.
ATTEST:
Shirley J. Bailey
Witness
Albert J. Wiegand
President
Lwendolym W. Wiegand
Secretary

CERTIFICATE

STATE OF FLORIDA } s.s.
COUNTY OF MARTIN }
I, the undersigned Registered Land Surveyor, hereby certify that
on Feb. 1968 this property was surveyed and this plat is a true
representation of the lands described and shown, to the best of my
knowledge and belief, and that permanent reference monuments have been
placed as required by the Statutes of the State of Florida thereunto
appearing.
Joseph S. Greenlees
Registered Land Surveyor
Florida Certificate No. 665
Subscribed and sworn to before me at Stuart, Martin County Florida,
this 14th day of Feb AD 1968.
Raye Brewer Truman
Notary Public State of Florida at Large
My commission expires:

APPROVED

STATE OF FLORIDA } s.s.
COUNTY OF MARTIN }
It is hereby certified that this plat has been officially approved for record
by the board of County Commissioners of the County of Martin, Florida,
this 28th day of May AD 1968.
APPROVED: H. J. Allen
County Engineer
Chairman Planning & Zoning Commission
Timothy S. Lewis
Chairman Board of County Commissioners

